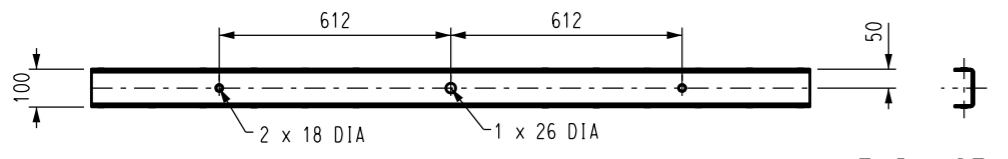
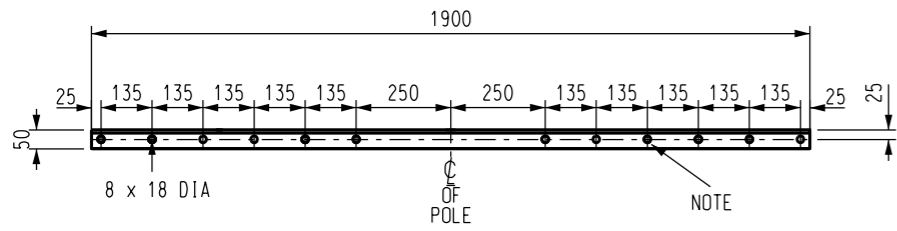


TOP VIEW



FRONT VIEW

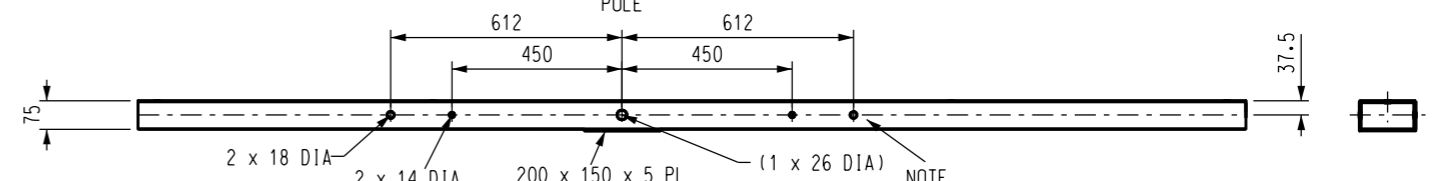
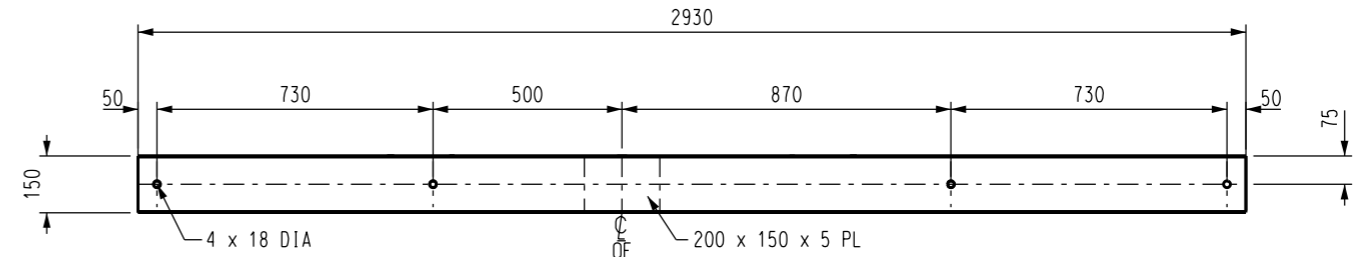
LV - SERVICE

MATERIAL: 100x50x6.7 HOT DIPPED GALVANIZED PFC
ITEM NUMBER: 411562

MATERIAL: 100x50x4 DURAGAL CC
ITEM NUMBER: 298554

END VIEW

TOP VIEW



FRONT VIEW

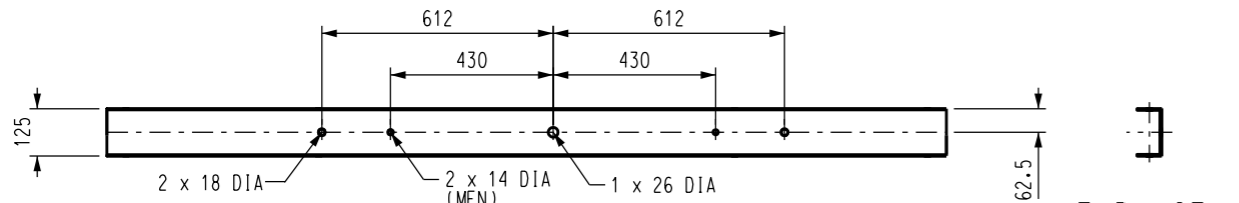
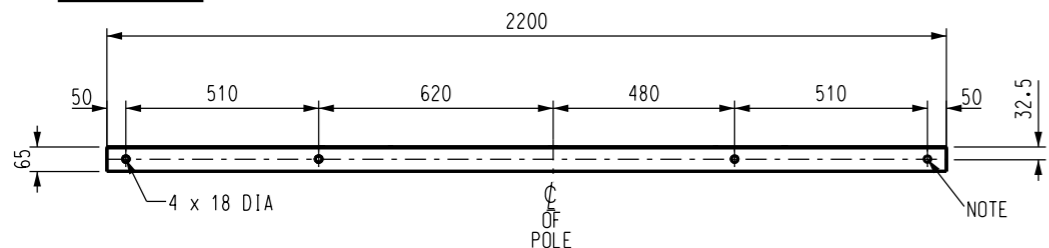
LV - TRUNCATED DEVIATION

MATERIAL: 150x7.5x9.5 HOT DIPPED GALVANIZED PFC
ITEM NUMBER: 411560

MATERIAL: 150x75x5 DURAGAL CC
ITEM NUMBER: 298570
STRENGTH: 5.5kN

END VIEW

TOP VIEW



FRONT VIEW

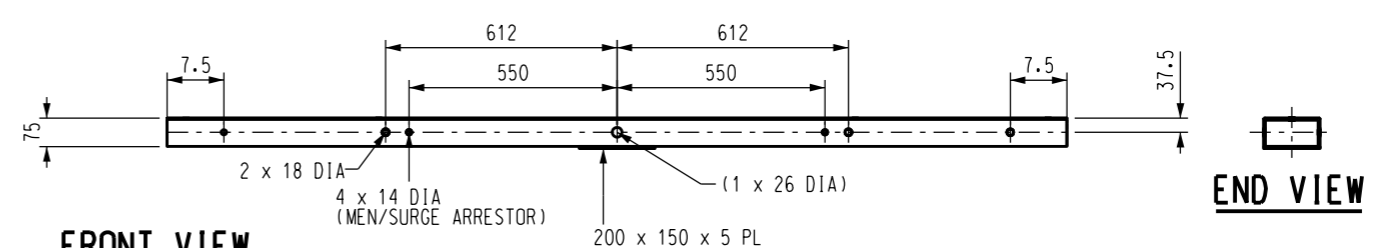
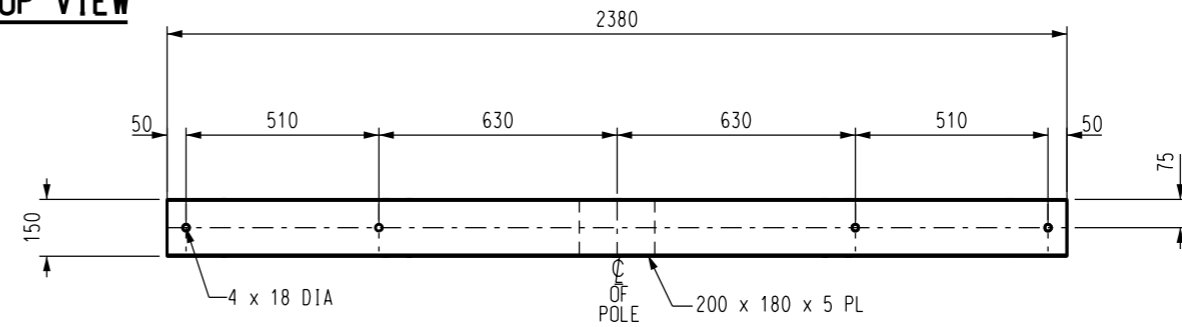
LV - LINE, 4 WIRE

MATERIAL: 125x65x7.5 HOT DIPPED GALVANIZED PFC
ITEM NUMBER: 411561

MATERIAL: 125x65x4 DURAGAL CC
ITEM NUMBER: 298562
STRENGTH: 8.2kN (STRONG DIRECTION)

END VIEW

TOP VIEW



FRONT VIEW

LV - TERMINATION, 4 WIRE

MATERIAL: 150x75x9.5 HOT DIPPED GALVANIZED PFC
ITEM NUMBER: 500498

MATERIAL: 150x75x5 DURAGAL CC
ITEM NUMBER: 298588
STRENGTH: 8.9kN

END VIEW

NOTES:

1. ALL HOLES ARE TO BE ON BOTH SIDES OF THE CHANNEL.
2. DURAGAL MATERIAL SHALL BE GRADE 450.

NO	DESCRIPTION	DRN	DATE	CKD	APPD
6	TITLEBLOCK & DRAWING NUMBER FORMATTED, GALVANISED ITEMS ADDED	K.T.	DEC'18	C.C.	C.C.
5	NOTE 2 ADDED, LV TERMINATION, PFC MATERIAL AMENDED	P.H.	APR'18	I.B.	B.C.
4	MEASUREMENT ON LV LINE 4 WIRE UPDATED	C.C.	DEC'14	A.T.	B.C.
3	TERMINATION CROSSARM UPDATED, LINE ARM EXTENDED	A.T.	AUG'12	B.C.	S.C.
2	HOLE CENTRE LINES EXTENDED, NOTE ADDED	J.C.	APR'08	B.C.	S.C.
1	NOTE ADDED	J.C.	APR'08	B.C.	S.C.
0	ISSUED FOR CONSTRUCTION	A.S.	7.3.01	M.B.	F.R.R.
AMENDMENTS					



DES	M. BOCK	POWER STANDARD DRAWING		
DRN	R. INNES			
CKD	M. BOCK	CROSSARMS, LV BOLTED CONNECTIONS FOR UNIVERSAL POLE CONSTRUCTION		
APPD	F. ROBSON			
SCALE	1:200	A3	DRAWING NUMBER	S01-01-02-11
ISSUED	DEC'2000			
ALL DIM.	IN mm			
DRAFTING STANDARD TO A.S.1100		CAD PRODUCT - DO NOT AMEND MANUALLY		6 AMDT